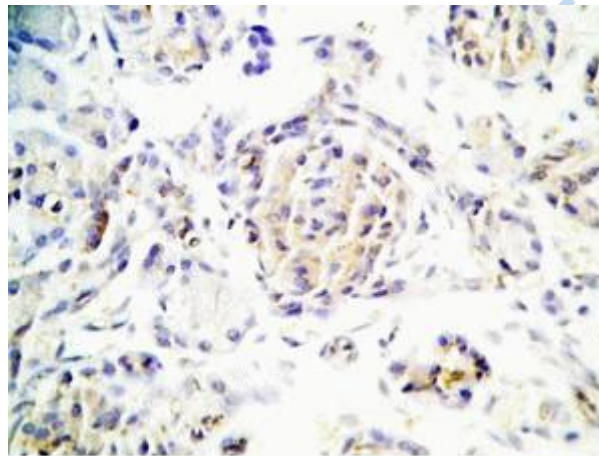


Catestatin (Mouse) - Antibody for Immunohistochemistry



Human pancreas tissue was stained by Rabbit Anti-Catestatin (Mouse) Antibody (catalog No.: H-053-28)

Protocol for Immunohistochemistry:

Tissue Sample	Human pancreas tissue
Fixative	10% Formalin
Embedding	Paraffin
Negative control	No primary antibody
Pretreatment	Intact
Blocking	3% H ₂ O ₂ , 2% Normal Goat Serum
Primary Antibody	Rabbit Anti-Catestatin (Mouse) Antibody (Cat. No.: H-053-28)
Optimal Dilution	1:500
Secondary Antibody	Goat anti-Rabbit IgG, Biotinylated (1:400, 30 min)
Amplification	Streptavidin-HRP (Vector), 1:400, 30 min
Detection system	HRP
Substrate	DAB (sigma), 30min
Counterstained	Hematoxylin, 30Sec

Catalog#	H-053-28 G-053-28
Standard Size	100 µl
Sequence	Arg - Ser - Met - Arg - Leu - Ser - Phe - Arg - Thr - Arg - Gly - Tyr - Gly - Phe - Arg - Asp - Pro - Gly - Leu - Gln - Leu
Species	Mouse
Host	Rabbit
Immunogen	Catestatin (Mouse)
Reconstitution	100 ul
Storage Condition	For optimal results, use the antibody as soon as possible after reconstitution. Store in lyophilized form unless needed and reconstitute immediately before use. Once reconstituted, the antibody should be stable for a few days at -4°C. For storage up to a few months, prepare small aliquots after reconstitution and freeze at -20°C or -80°C. Repeated freeze thaw cycles should be strictly avoided.